

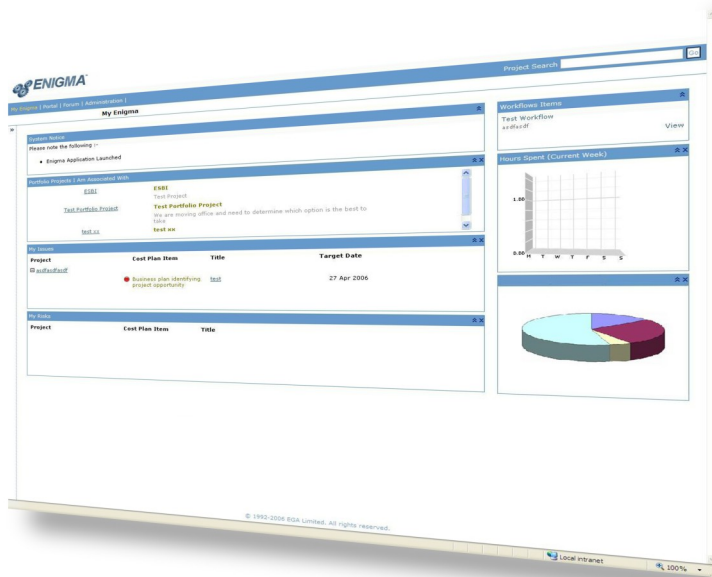


EGA Consulting LLP  
Watton House  
Watton Road  
Ware  
Hertfordshire  
SG12 0AE

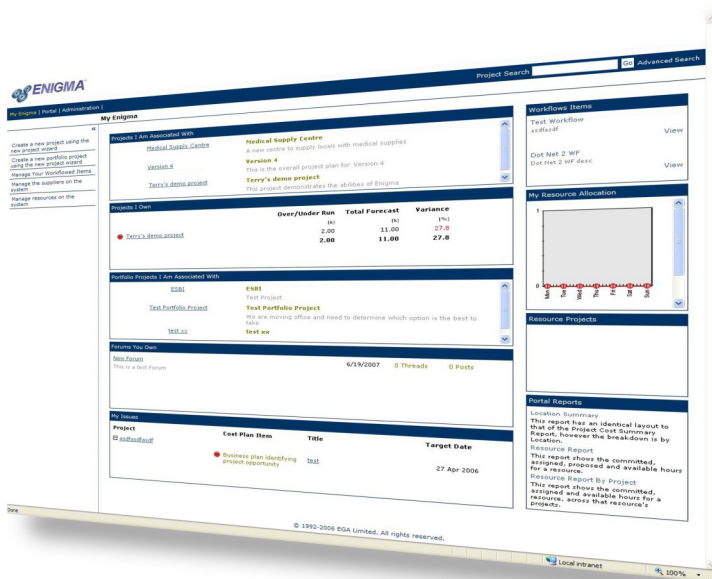


Tel: 01920 860 130  
Email: info@ega.co.uk  
Web: www.ega.co.uk

The ever increasing complexity of the business environment means that the traditional approach to managing discrete projects is no longer sufficiently well tuned to the way people work. Today's enterprise requires optimised performance across a wide variety of organisational roles. Executives, project managers, resource managers, team members and partners must not only collaborate, but excel within their unique daily activities.

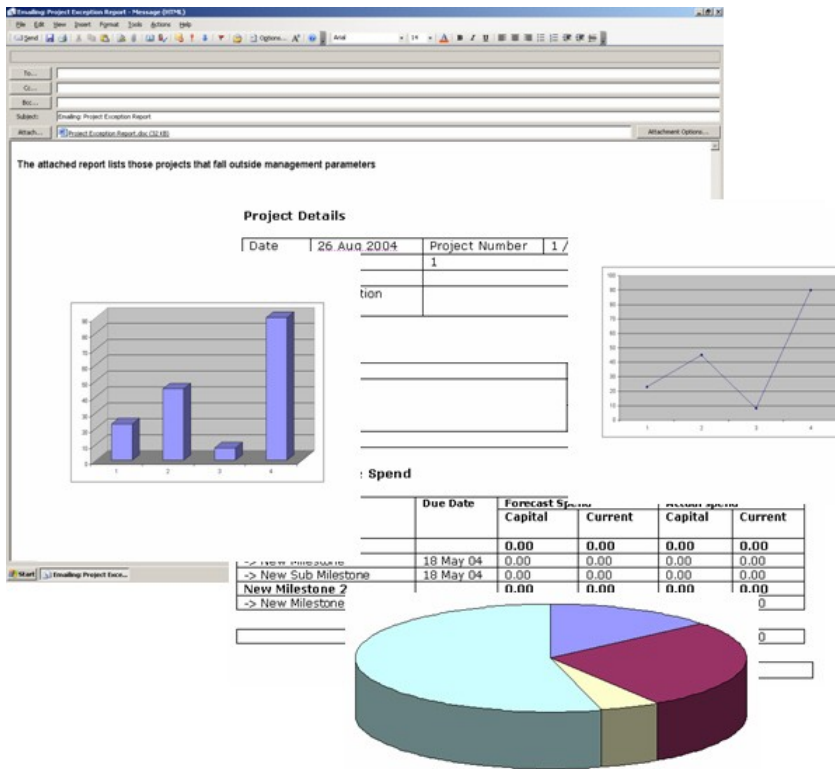


A well-defined project selection, prioritisation and portfolio management process, is essential as a basis for logical project decision-making. Enigma™ provides the ability to achieve a Programme Management centre of excellence by providing a web based collaborative Programme and Project Management solution to enable a Programme Management team to Manage and deliver successful Projects.



Many Project Management solutions force users to adopt new, unfamiliar, unwieldy processes that cause users more work and often times lead to failed implementations. Enigma™ was specifically designed as a powerful, solution to enhance any processes and methodologies that are already in place through a series of easy to use screens.

Enigma™ ensures essential reports are produced on time and automatically generates exception reports if projects look like they are going adrift. E-mail messages can be sent to all people in the authorisation chain and notifications are triggered when preset values are exceeded.



The reporting engine gives the user the ability to define rules based exception reports, monthly reports and management reports. All reports may be opened on the system or be requested or pushed on subscription by users.

Reports may be rendered in different formats (such as HTML, PDF, Spreadsheet) for different users and needs. On screen reports may be 'drilled down' to interrogate the data behind the report.

## Features

- ⚙️ Web based system accessible anywhere
- ⚙️ Personal Portal Page
- ⚙️ Create Portfolios, Programmes, Projects and Project Options
- ⚙️ Model projects using Financial Tools
- ⚙️ Include business Strategies and Objectives
- ⚙️ Create Project Investment Plans and Business Cases
- ⚙️ Build a comprehensive Project Plan
- ⚙️ Schedule start and finish and record percentage completion
- ⚙️ Plan project expenditure across multiple sources of funding and Cost Codes
- ⚙️ Produce latest Forecasts to Completion
- ⚙️ Manage Project Changes
- ⚙️ Manage project Risks and Issues
- ⚙️ Manage Project Documentation
- ⚙️ Connect to other Financial and Management systems
- ⚙️ Produce graphical and textual reports
- ⚙️ Workflow documents for approval
- ⚙️ Collaborate with colleagues